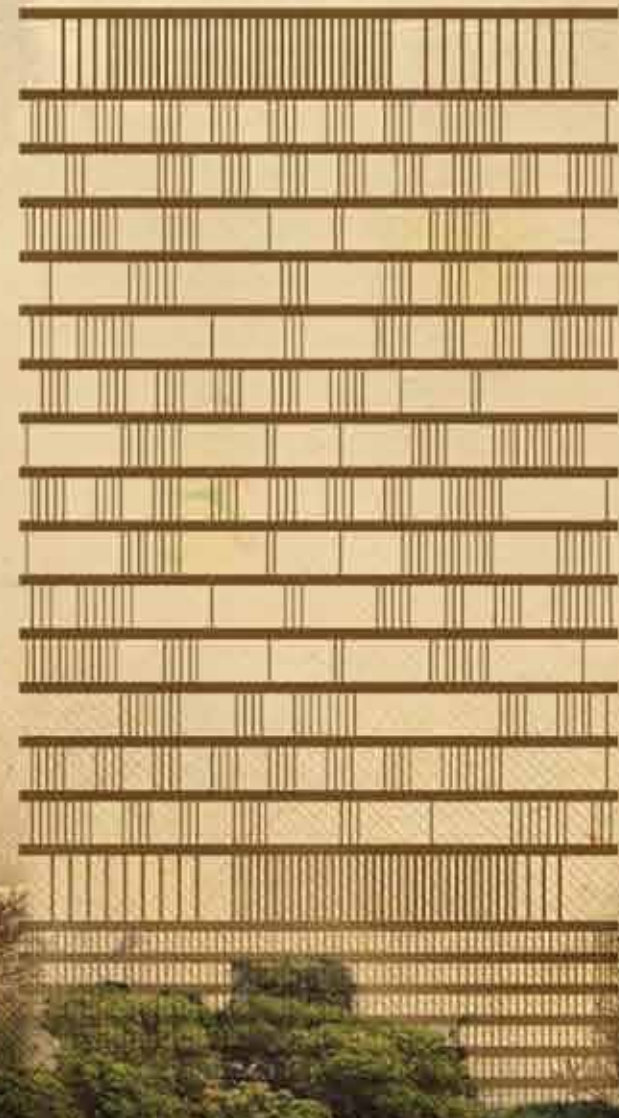


CARMICHAEL
RESIDENCES



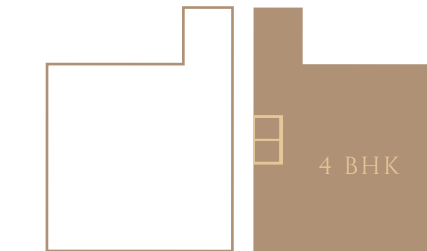
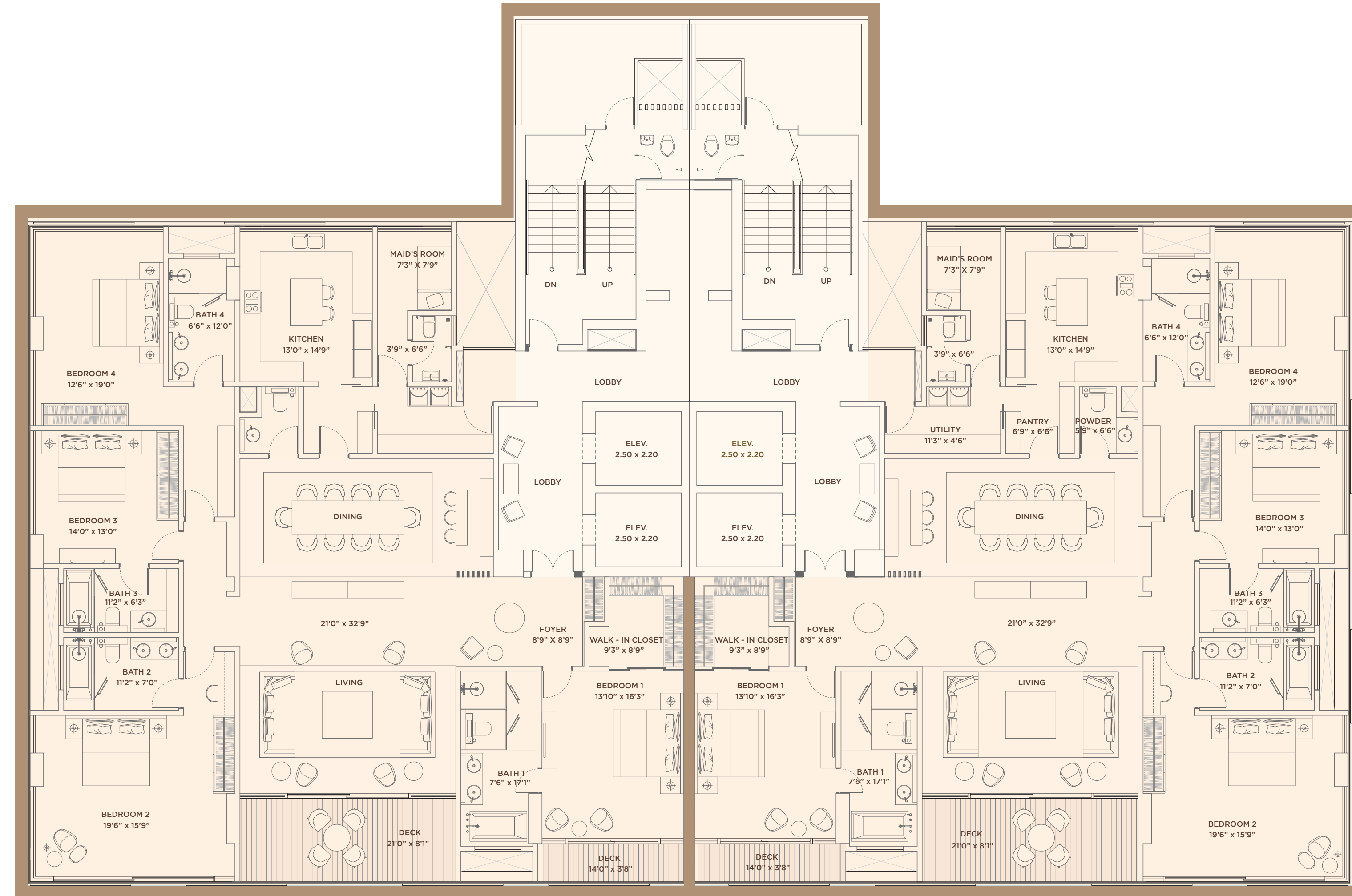
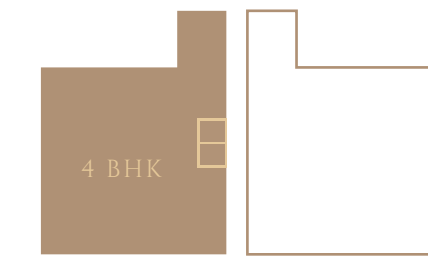
FOUR BEDROOM FLOOR PLAN

COMBINED VIEW

Carmichael Residences is one of the first buildings to offer a completely customizable floor plan which gives you the flexibility to structure and design your house the way you want. This also maximizes the allowable carpet area and the built up efficiency.



FOUR BEDROOM RESIDENCES



COMMON FEATURES

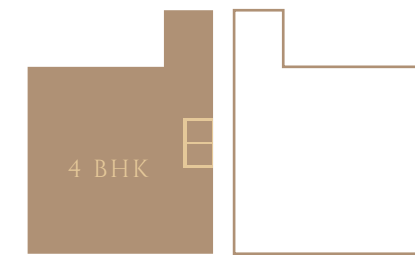
- Luxury 4 BHK spacious apartments
- Highest efficiency to maximize carpet area
- Two residences per floor
- Natural lighting and optimum cross ventilation
- Bare shell with flexible design
- Separate Maid's room and toilet for each apartment

FOUR BEDROOM FLOOR PLAN

SEPARATE VIEW

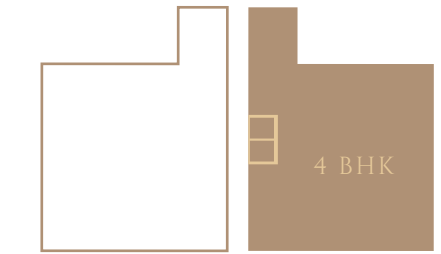
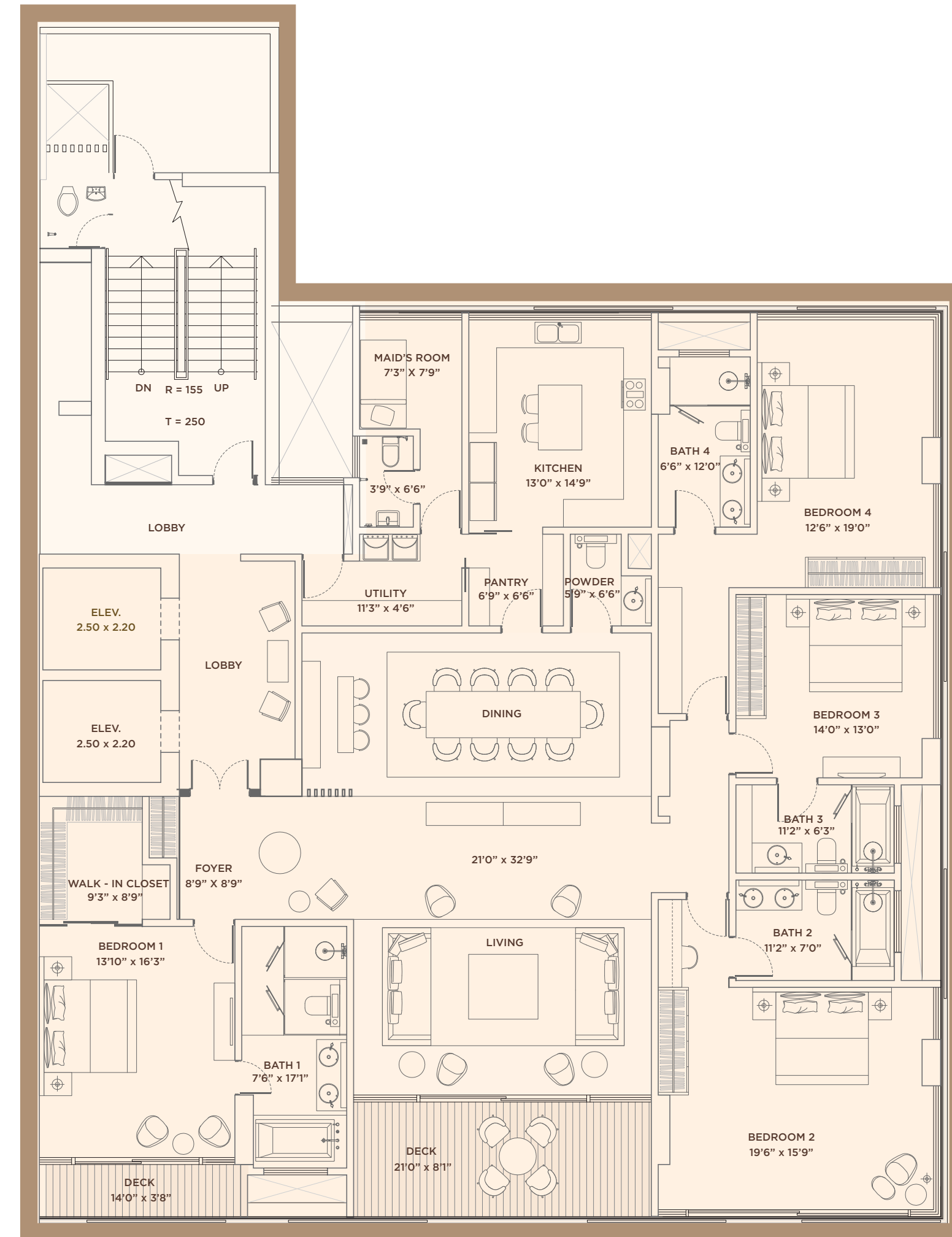
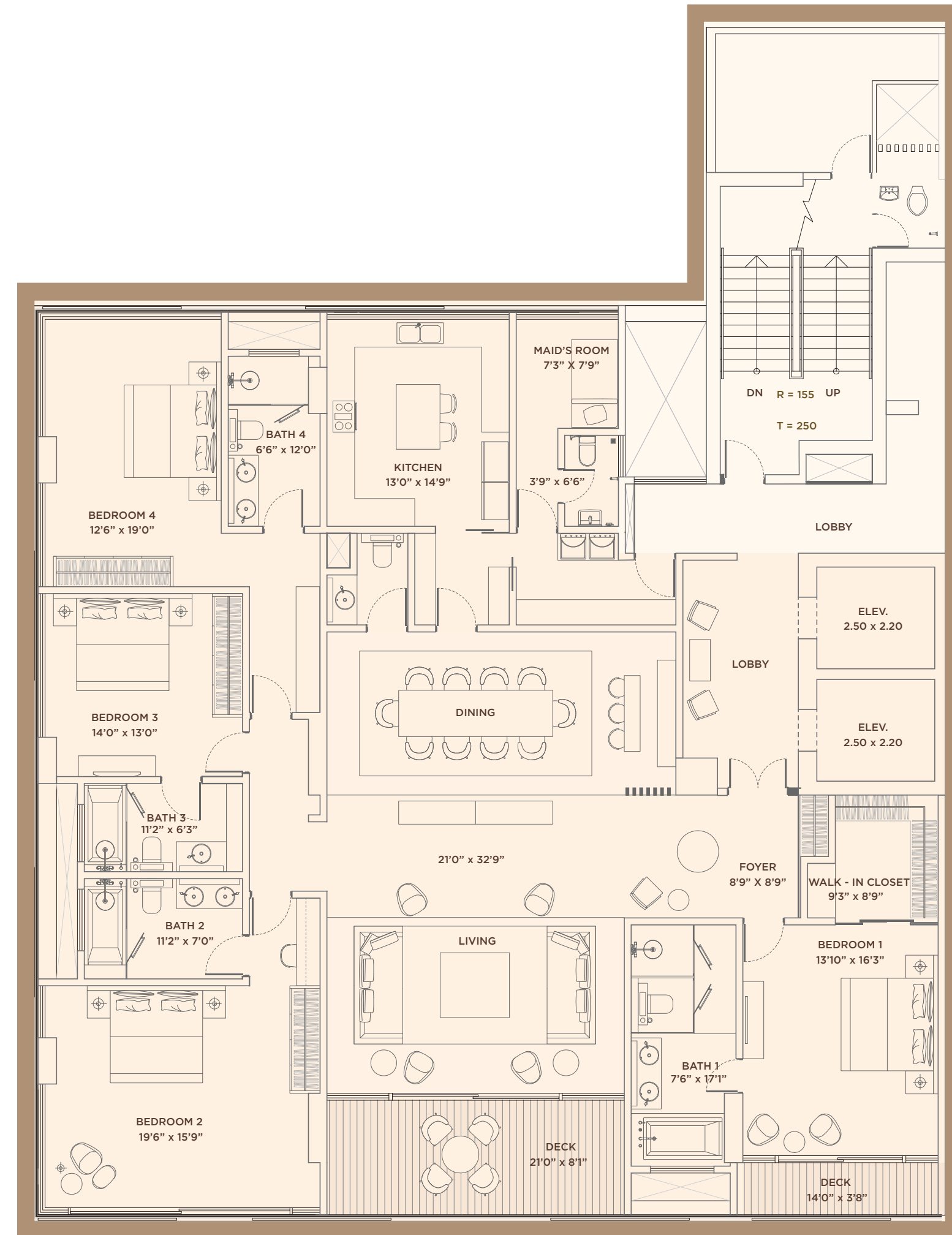


FOUR BEDROOM RESIDENCES



COMMON FEATURES

- Luxury 4 BHK spacious apartments
- Two residences per floor
- Bare shell with flexible design

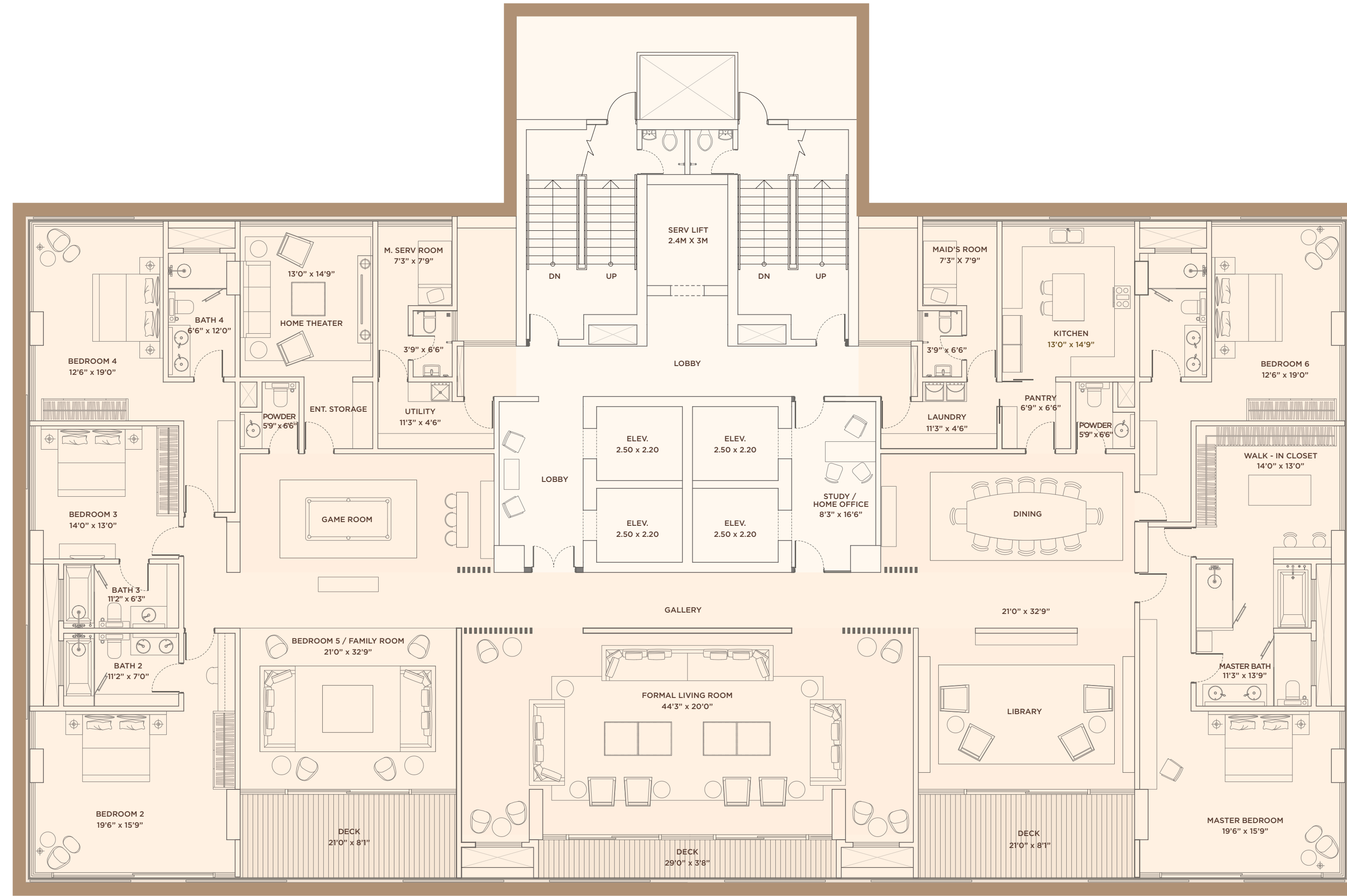
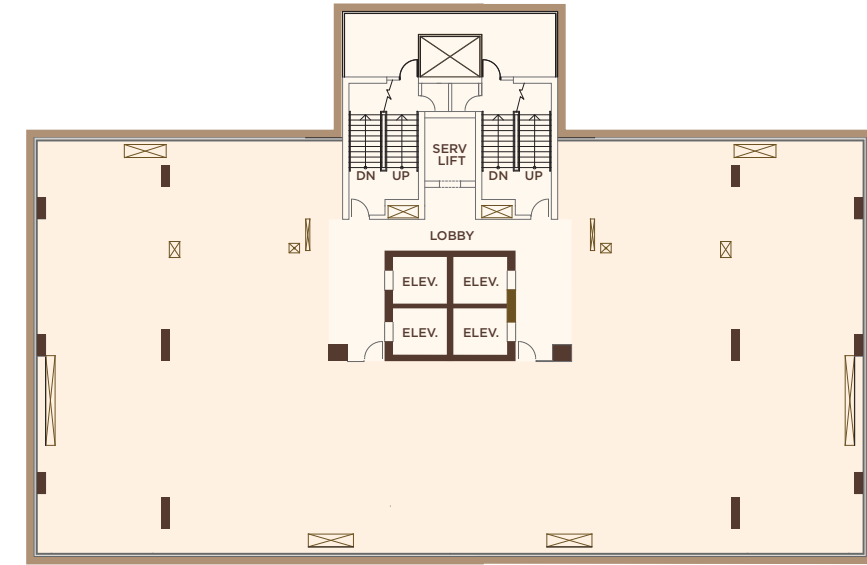


COMMON FEATURES

- Highest efficiency to maximize carpet area
- Natural lighting and optimum cross ventilation
- Separate Maid's room and toilet for each apartment

SIX BEDROOM FLOOR PLAN







The image below shows the 'BARE SHELL' of a 6BHK (an entire floor) and this can be completely customized as per your needs. The larger image on the right is what we suggest as a typical floor plan for this apartment.



SIX BEDROOM RESIDENCES



COMMON FEATURES

-  Luxury 6 BHK spacious apartments
-  Moveable shades to enclose balcony area
-  One residence per floor
-  Private elevator & lobby for each apartment
-  Complete customization of floor plan
-  Designed in compliance with 'Vaastu'



Site Address: 17-A M. L. Dahnukar Marg,
Carmichael Road, Mumbai - 400026